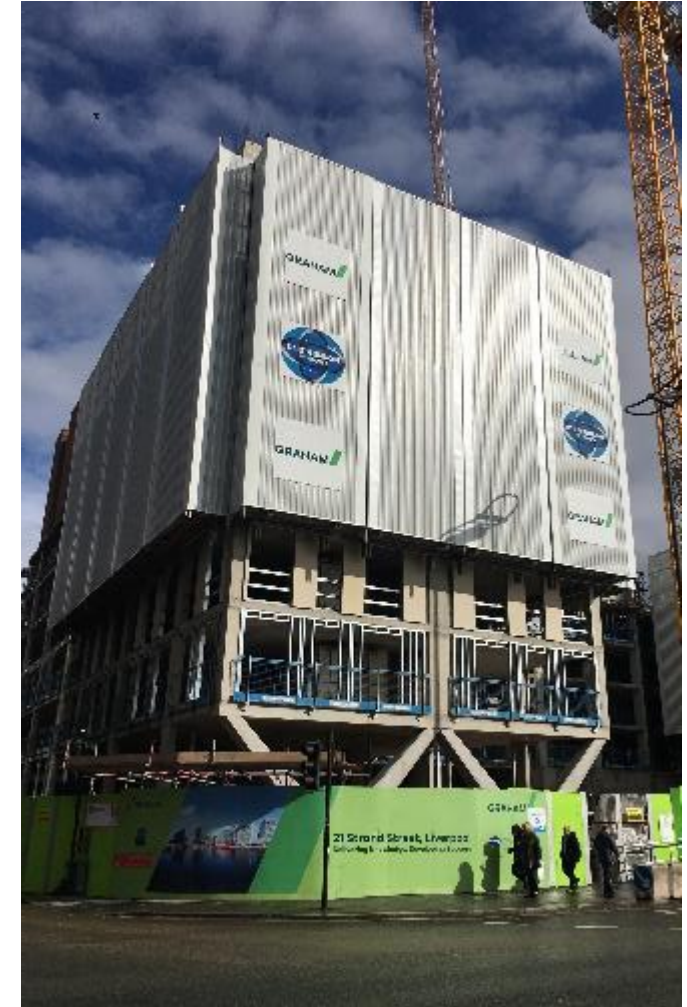


# Experience, Service & Product Range

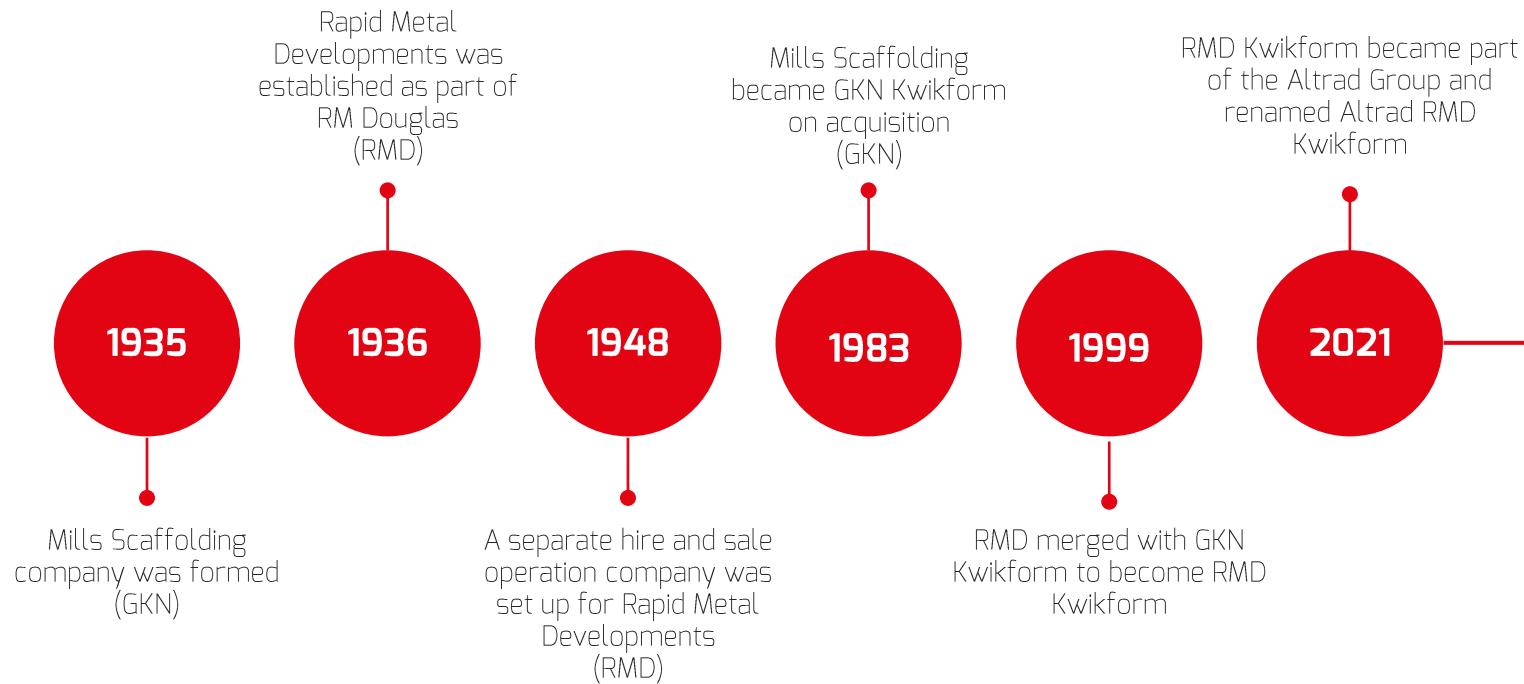
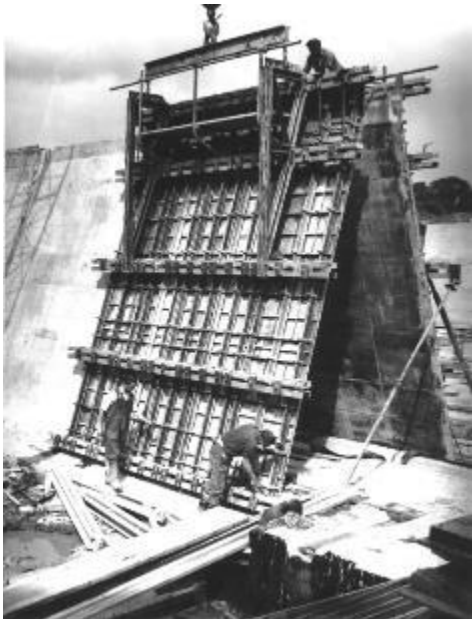


# Contents



- RMD Kwikform History & The Services Provided World-Wide
- Formwork
- Falsework/Shoring
- Girder Systems
- Ground Shoring
- Importance of In Situ Formwork to Construction Companies
- Key Sectors, Project Types & Customers
- Forming, Shoring & Ground Shoring Product Range
- Engineering

# Altrad RMD Kwikform Beginning & Growth



# UK BRANCH LOCATIONS



# UK ACCREDITATIONS

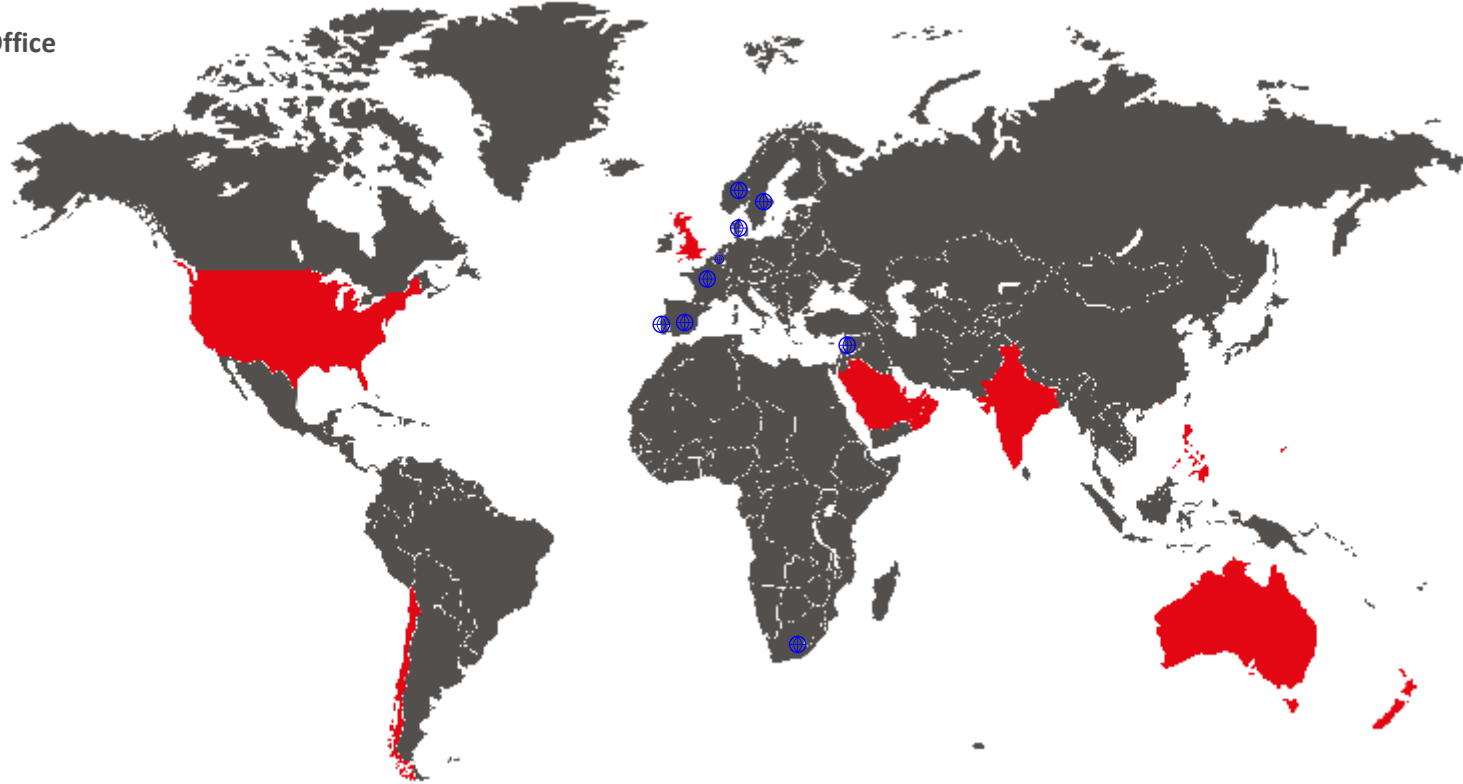


# Global Network

RMD Kwikform International Head Office

UK Export Locations\*  
& International Locations

United Kingdom\*  
Poland\*  
Hong Kong  
USA  
India  
Chile/ Peru  
Australia  
New Zealand  
Bahrain  
Guam  
Saudi Arabia  
Oman  
Philippines  
Qatar  
UAE



International Distributors

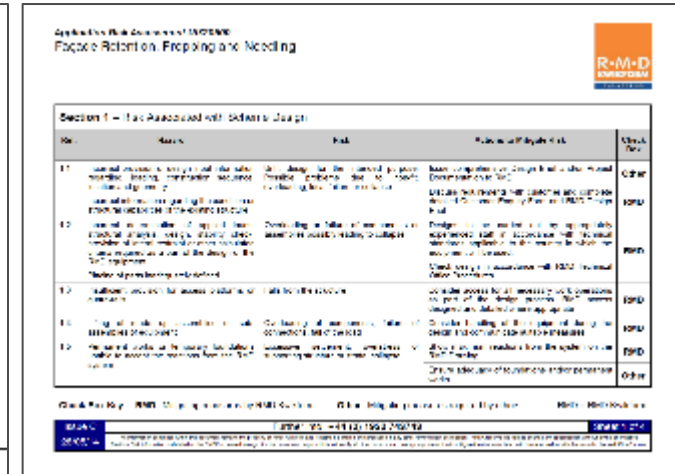
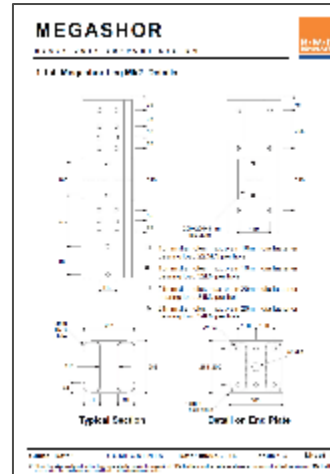
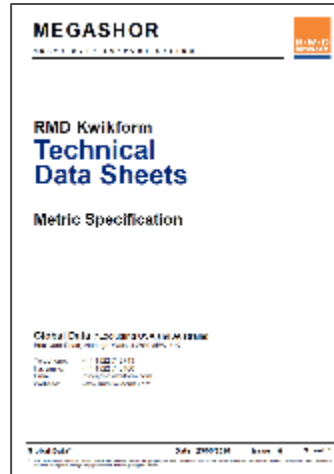
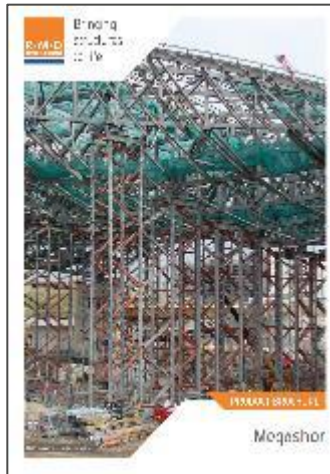
Israel  
Sweden  
Norway  
Netherlands  
France  
Denmark  
Spain/Portugal  
South Africa

# UK Export Global Project Delivery

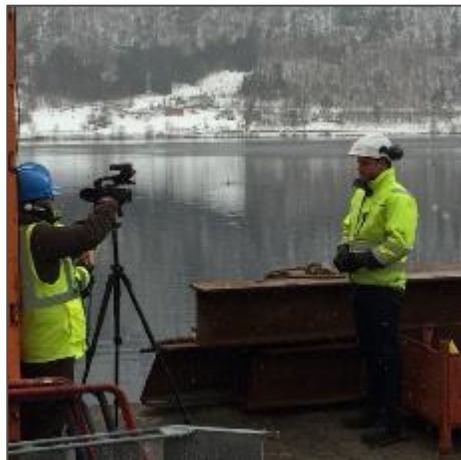


# Value Added Service – Support Documentation

Technical Literature  
Including:  
Product Brochures  
Technical Data  
Risk Assessments  
H.I.M. Sheets  
Design Briefs



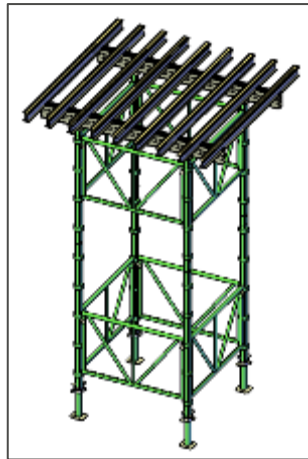
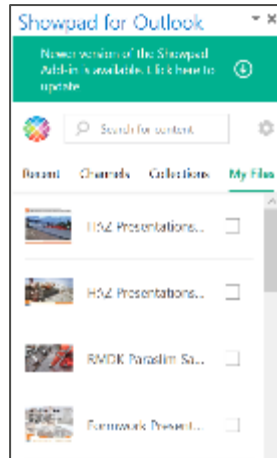
Site Video On  
Website



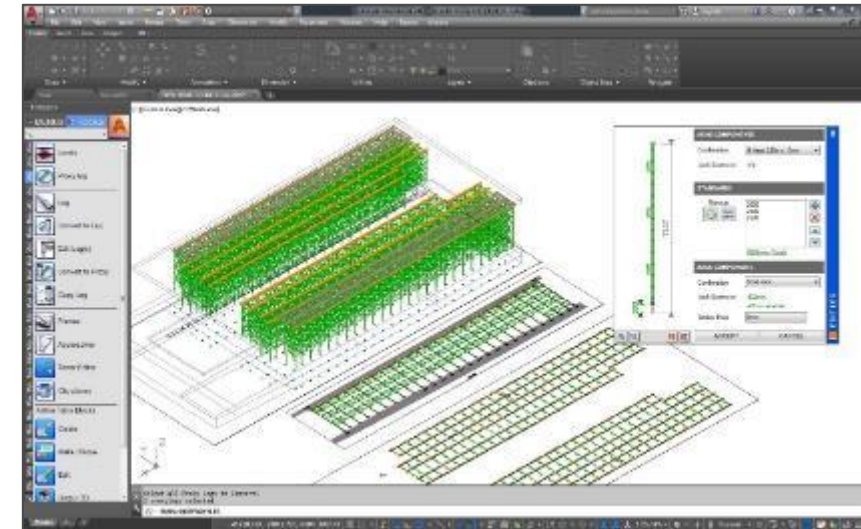
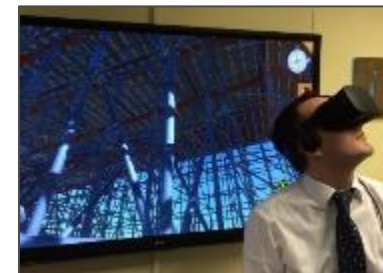
# Value Added Service – Technical & IT Support

Technical Design & IT Support

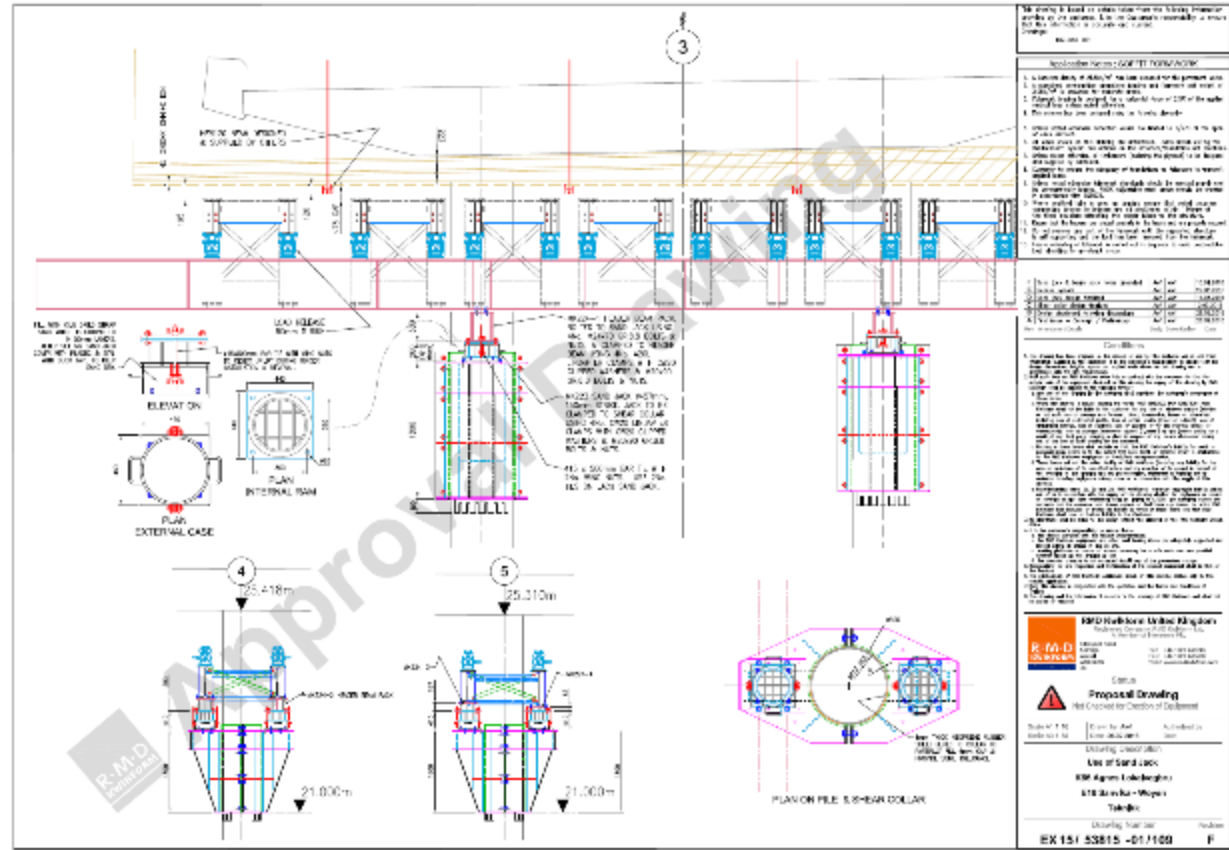
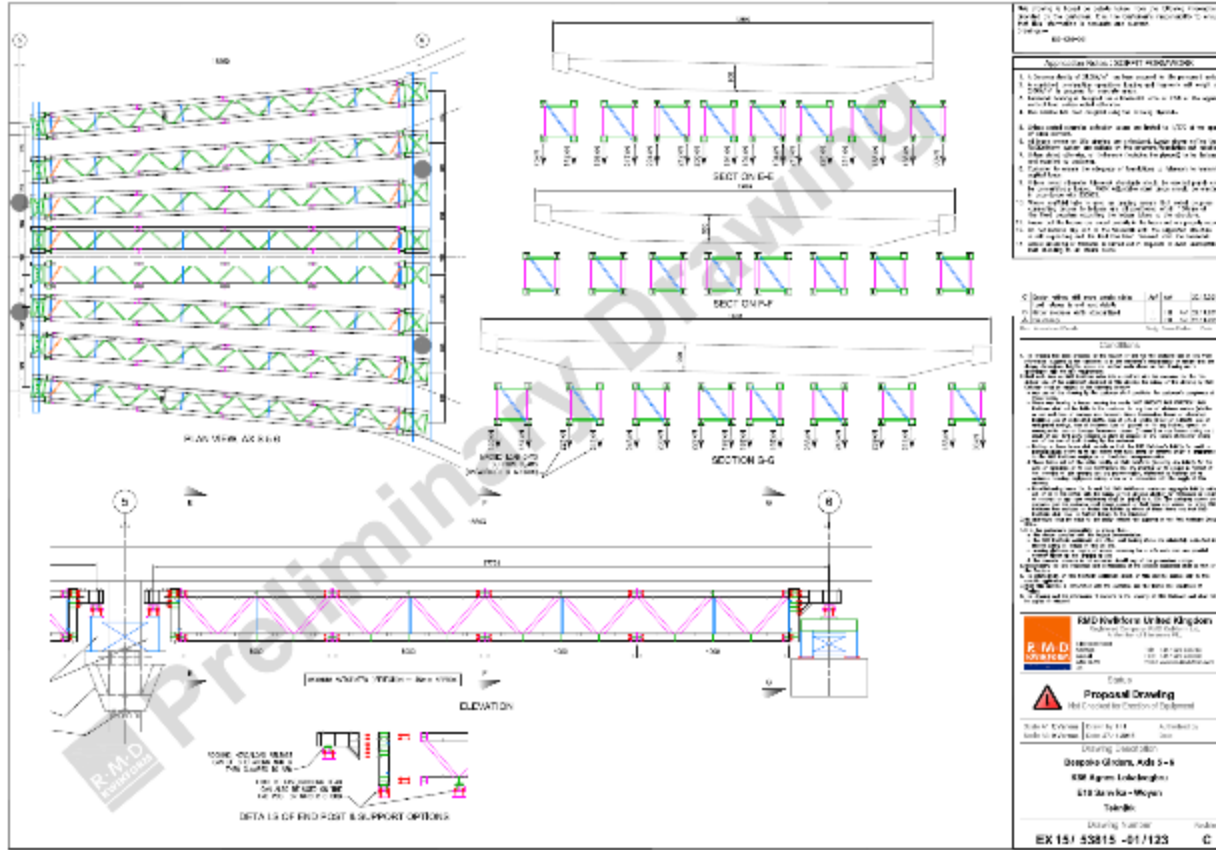
AutoCAD Design  
RMD Developed 3D Design  
Showpad  
iPad App  
RMD Developed Product &  
Project Animation



RMD Developed Locus Design Program  
RMD Developed Augmented Reality  
RMD Developed Virtual Reality – Site Design  
Locus Eye



# Value Added Service – Engineered Design



# Value Added Service – Engineered Design



# Value Added Service – Equipment & Training

## Equipment Availability

Dedicated equipment storage facility in UK & Distributors around Scandinavia & Europe

- Quickly respond to customer needs.
- Flexibility in delivery.

Supported by international network of 24 operating companies worldwide to ensure equipment delivered when needed – on time and in full. At any one time RMD Kwikform has up to 40 containers moving equipment around the world direct to site or between operating companies.



## On Site Assistance & Training

Trained Technicians to provide practical on site support:

- Ensure most effective use of equipment on site.
- Provide solutions to ongoing on-site variations required.
- Ensure safety levels are maintained.



# Key Sector & Projects

Bridges, Roads & Rail

Tunnels

Airports

Harbours/Docks

Commercial Projects - Shopping Malls

Sporting Arenas

Power Stations

Dams, & Hydro Power

High Rise Buildings

Industrial Construction

Leisure & Entertainment

Religious & Cultural Buildings

Hospitals

Basements

Underground Tank Installation

Water Treatment



# Customers/Contractors

Civil Engineering  
Highway Maintenance  
Bridge Construction  
Concrete Frame Contractors  
Concrete Subcontractors  
Government Highways Department  
Tunnel Contractors  
General Construction Contractors  
Ground Shoring Contractors  
Local Authorities  
Harbour/Water Specialists  
Offshore Oil/Gas Platforms/LNG  
Ship Building/Refurbishment  
Demolition Contractors  
Refurbishment Contractors  
Farmers  
Home/Apartment Builders



# RMD Kwikform Equipment Range

## Wall Formwork

- Minima
- Maxima
- Trapeze
- Superslim & Alform
- Special Formwork

## Clear Span Girder Systems

- R800
- R600
- Mega Truss
- Mega Girder

## Heavy Duty Shoring & Propping

- Megashor
- Superslim Soldier
- Tetrashor

## Falsework & Shoring

- Alshor Plus
- Rapidshor
- Airodek
- Paraslim Safe Tie
- Tableform
- Half Tunnel

## Safety

- Ascent S Screen

## Climbing Formwork

- Ascent F
- Rapidclimb

## Ground Shoring

- Tubeshor
- Geobrace
- Trench Box Systems
- Manhole Box  
Systems
- Drag Box Systems
- Manhole Brace

# Formwork Systems

Formwork Systems Maxima, Minima, Trapeze & Superslim/Alform



# Minima Hand Portable Formwork Panel System

Robust hand portable panel wall formwork system.

Weight of panels only 30kg/m<sup>2</sup> with an Alkus Facia.

Withstand concrete pressures up to 60kN/m<sup>2</sup>. for single height panels and 55kN for extended forms.

A range of 18 std panels allow range of layouts & pouring heights.

Crane Hook – a pair of cranes hooks can lift a 25m<sup>2</sup> area of Minima panels.

Erection/Striking times of between 2m<sup>2</sup> to 3m<sup>2</sup> per man hour are generally achievable



# Maxima Formwork Panel System

Robust large panel wall formwork system with an Alkus Facia.

Withstand concrete pressures up to 80kN/m<sup>2</sup> Basic panel sizes and clamps ensure ease of use.

A wide choice of panels allow range of layouts & pouring heights.

Maxima is a versatile & cost effective system for:

- Walls
- Columns
- Buttresses
- Culverts
- Abutments & Piers
- Service Cores
- Basements



# Superslim & Beam Traditional Formwork

The Largest Forming Panel,  
Minimal Joints, Larger Pours,

Travelling Forms

No limitations on design pressure.

Infinite flexibility of “tie positions”.

Designed with minimum number  
of ties resulting in labour savings  
in  
fixing and making good tie holes  
on  
every pour.

Up to 20% lighter than  
proprietary panel or Timber  
Formwork



# Trapeze Radius Formwork Panel System

Trapeze is a Trapezoidal radius girder Formwork system

Trapeze has a plywood face and is fully adjustable to suit most radius wall formwork applications.

It's unique features make it ideal for curved concrete wall



# Special Formwork (Sale Only)

Steel columns designed and fabricated to all specifications

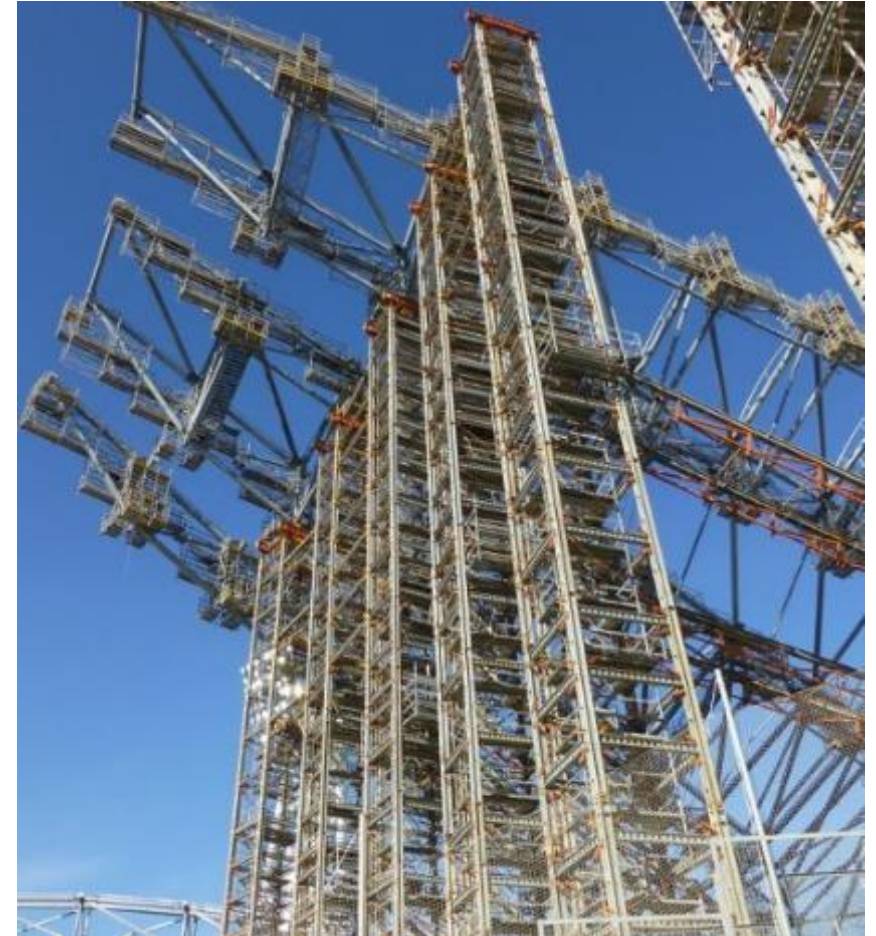
Self climb, column traveller or single columns can be accommodated fabricated in steel giving an excellent concrete finish for multiple or single applications.

Steel Jersey Barriers or Special Road Formwork



# Falsework & Shoring Systems

Shoring Systems, Rapidshor, Alshor Plus, Airodek, Paraslim Safe Tie, Tableform & Half Tunnel Form



# Rapidshor

High leg capacity up to 80kN.

Modular system quick & easy to erect.

Galvanised finish eliminates corrosion.

Tilted head and base easily accommodates Sloping ground & elevated slabs.

Provides economic solutions for:

- Bridge Decks.
- Viaducts.
- Commercial / Retail Buildings.
- Culverts.
- Tunnels.
- Turbine Pedestals.
- Reservoirs.
- Loading Platforms.



# Alshor Plus

High performance aluminium shoring system.

High leg load up to 120kN/leg.

Variable leg frame positions increase versatility.

1250mm extension range of long jack.

Provides support for applications including:

- Static Slab Support.
- Towers and high reach birdcage assemblies.
- Mobile Tables.
- Flying Tables.
- Props and back propping.



# Airodek

Two basic components

- Airodek, Props & Airodek Panels
- No primary beams
- No secondary beams
- Supports RC slabs up to 450mm thick

Erection Rates of 40sq.m./man hour recorded

Airodek propping creates clear uncluttered working area for safe movement around site

Airodek on Alshor Plus, Combines two great Falsework systems.

Airodek crown attached to Alshor Plus Legs for 'infinite' propping heights using Airodek Beams 3m, 2.4m and 1.8m long.

Airodek max grid size of 3m x 1.8m = 5.4m<sup>2</sup>  
Competitor max grid size 2.3m x 1.5m = 3.45m<sup>2</sup>

Airodek has a 57% greater surface area for the same amount of support legs while supported by Alshor Plus...



# Paraslim Safe Tie & Web Tie

## Composite Bridge Solution

### Paraslim Safe Tie:

- Flexible modular cantilever formwork systems.
- Deck edge projections & parapet string courses.

### Web Tie:

- Modular soffit formwork panels.
- Increase the speed/efficiency of construction.
- Provide economical & flexible alternative to permanent formwork. Mounted from Bridge Steel or Concrete Beams eliminates the need for falsework from the ground. This ensures lanes stay open allowing vital road and rail traffic restriction free passage during construction. The Paraslim SafeTie System has a safe work loading of 65kN



# Tableform (Sale Only)

Tableform is a quick and versatile solution for multi storey construction of slabs up to 600mm.

Few components ensure Tableform is quickly erected, struck and repositioned giving faster cycle times.

Easy to relocate, with the options of either being wheeled into position, or lifted to higher floors.

Tableform was created to be a basic, low cost table system solution with a 35kN leg capacity.

Assembly of the table top can be carried out in a dedicated area prior to being moved into position, maximising on site efficiency.



# Half Tunnel Form (Sale Only)

Half Tunnel Formwork is a cost effective and established system in the construction of residential and commercial multi storey buildings.

It's unique feature is the monolithic construction of room walls and soffits being cast together in one concreting operation.

The prefabricated design allows fast installation and striking of forms.

Manufactured from prime quality steel face plate and available in five standard lengths and four standard half widths, ranging from 1.2m to 2.4m, eliminates the need for specialist formwork carpenters. A range of standard design gable and end wall formwork panels eliminates the need for on site formwork fabrication. Pre-cast concrete cruciform spacer blocks ensure accurate wall kickers to be constructed concurrent with the slab.



# Clear Span Solutions

Girder Systems R800, R600, Mega Girder & Mega Truss



# R800 Truss System

12m – 55m Clear Span Working Range



# R600 Truss System (Sale Only)



# Shear Collars & Bands



# Mega Truss & Mega Girder

Megashor Mega Truss 30m+ Clear Span Working Range



Mega Girder 3.6m – 14m Clear Span Working Range



# Safety Screen Systems

Ascent S Screen System



# Ascent S Safety Screen

Ascent-S is a safety screen and debris protection system, made for the protection of the public and workers on high-rise construction projects. The fully enclosed screen provides edge protection for workers and prevents debris

from leaving the site. It can also reduce exposure to wind and rain, making working conditions at height easier and helping to reduce worker vertigo, improving productivity and safety.

Arriving pre-assembled promotes on-site productivity. Extending telescopic arms increase maximum width of individual screens reducing the number required to complete a perimeter.

Up to 4 screens can be delivered in one delivery reducing transport costs and increasing productivity of system. Fully closed screen will reduce exposure to wind and rain making working conditions at height easier.

Ascent cladding seals screen joints up to 90 degree allowing complex perimeter shapes to be completely sealed



# Ascent 200 Safety Screen

Ascent 200 has been designed in close consultation with leading contractors from across the global construction industry to ensure that it exceeds the requirements of a debris protection system worldwide.

The new mast section offers strength improvements over Ascent 5 masts. Ascent 200 can protect two wet decks, assisting in the improvement of construction cycle times. It also allows protection to two lower slab levels enabling trades to begin work earlier on lower levels.

New hydraulic multi screen climbing option reduces reliance on crane time and enables multiple screens to be lifted on the same hydraulic cycle improving safety and efficiency.

New Steel mesh screen cladding provides fully rentable cladding option reducing sales cost of the screens. Plastic Sheet cladding option is also available where marketing messages are required.



# Climbing Formwork Systems

Ascent F & Rapidclimb Climbing Systems



# Ascent F Guided Climbing Formwork

Ascent F system is 3 systems in one:  
Formwork support/access platform for construction of cores, & piers.

Protection Screen. Trolley mounted formwork panels retract from concrete face using rack & pinion mechanism.  
The platform can accommodate some material such as rebar.  
Formwork, access platforms, safety barrier & trailing Platforms lifted as one.

Also available as a Self-Climbing System.



# Rapidclimb Crane Lift Jump Formwork

A Crane assisted climbing formwork system.

Utilizing a robust galvanized climbing bracket, a 45kN max vertical capacity is achievable which results in the real time benefits tabled below. Climbing bracket connects to wall with recoverable anchor screw – meaning no lost parts.

Reduced crane time in moving platform and formwork are essential so the crane handling is done in one single operation. This speeds up concrete cycle, reducing programmed time on multi-floor builds.

Rapidclimb has eliminated the need to lay down form for cleaning with the retractable forms having 750mm of movement on the fast rack and pinion pull back mechanism and enables cores to be constructed in advance.



# Heavy Duty Shoring & Propping

Megashor, Superslim Soldier, Tubeshor & Tetrashor Systems



# Megashor

Ultra-high duty modular propping system.

750kN axial load capacity.

8 strut sizes - from 15mm to 5400mm.

Designed to be used with RMD Kwikform Superslim Soldiers

Provides complete solutions for:

- Heavy Duty Falsework.
- Cofferdams.
- Bridge Launching.
- Bearing replacement.
- Façade Retention.
- Travelling Slab & Tunnel Formwork.
- Excavation Support



# Superslim Soldier System

Unrivalled strength to weight ratio.

9 standard lengths from 10mm to 3600mm.

Versatile for virtually any application.

Can be assembled into:

- Wall Formwork Panels
- Façade Retention
- Travelling Gantries
- Vertical & Raking Shores
- Spanning Beams & Trusses
- Support Structures for Temporary Site Buildings
- Bridge Cantilever Edge & Deck Supports



# Tubeshor

Tubeshor hybrid hydraulic tubular shoring system is used for propping waling beams or capping beams of large excavations and for vertical applications such as bridge bearing replacement.

Tubeshor is available in 4 sizes – 320, 460, 610, 1060 which can all be simply bolted to one another using accessories to create required lengths.

An allowable working load (compression) in 320 of 1,400kN up to 1060 which has an allowable working load (compression) of 10,000 kN this provides flexibility to cope with horizontal propping lengths up to 50m with fewest possible joints.

Tubeshor is fully European Standard compliant, designed and manufactured in accordance with latest standards EN14653, EN1090 and carries the quality CE mark.



# Tetrashor (Sale Only)

Tetrashor is a sale only lightweight modular lattice prop system

400kN maximum working load

Individual props up to 17m

Taller braced towers up to 22m

Galvanised – clean and maintenance free

Compatible with Megashor, Superslim and Rapidshor

Versatile head and base options

Eight different prop variants.....

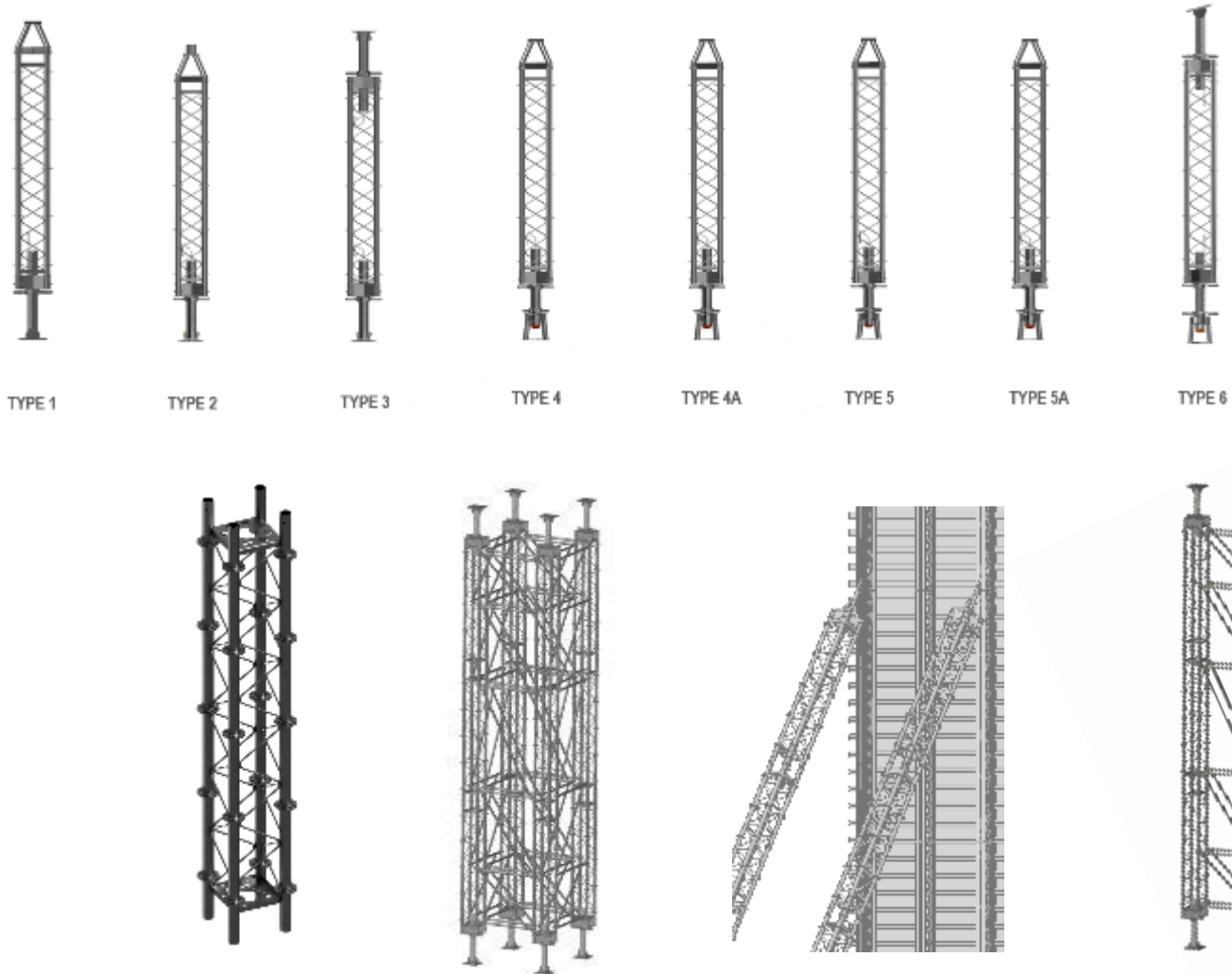
Portable – hand carry into buildings

Half the weight of Megashor at only 30kg/m

3 leg lengths 1.5m, 2.0m and 2.5m

Connect end to end using Rapidshor sleeves and safe pins or sleeve clips

Disks enable connection of Rapidshor ledgers



# Ground Shoring

Tubeshor, Geobraces, Manhole Brace, Trench & Drag Boxes



# Double Acting Manhole Brace

Double acting manhole brace is a four sided manhole bracing system is used with trench sheets or sheet piles to create small cofferdams for the construction of manholes, small chambers & tanks.

The system is the first in the market to be CE compliant and comprises of 6 different lengths of hydraulic bracing frame legs (types A-F) which simply pin together at the corners saving you time, labour and cost.

With an allowable axial capacity of 180kN for the hydraulic rams, RMD Kwikform's manhole bracing system is the strongest in the market

Double Acting Manhole Bracing system is fully European Standard compliant, designed and manufactured in accordance with latest standards EN14653, EN1090 and carry the quality CE Mark



# Geobrace

Available in 3 different duties of 254, 390 & 550 RMD  
Kwikform's GeoBrace has market leading allowable bending moments of up to 2310kNm.

Suspended from the trench sheets with restraining chains, the GeoBrace range is able to span up to 28m (depending upon duty).

Thanks to the GeoBrace's unique and innovative design, it not only has the slimmest section on the market at the joints (minimising the size of dig required), but there is no loss of allowable bending moment at the joint between extensions or in the power pack eliminating the logistical and potential safety issues associated with lower performance joints or those with limited reverse bending moment capacity.

Comprising of varying lengths of leg extension (from 0.5m to 10.8m) & a hydraulic power pack which simply pin together at the joints, RMD Kwikform's GeoBrace range is used with trench sheets or sheet piles to create small to large cofferdams and for the construction of manholes, chambers & tanks. The unique twin pin joints also feature an integral shear stop for knee brace props. At the corners a single pin is used to enable an articulated joint which can accommodate angles of between 66 degrees and 180 degrees.



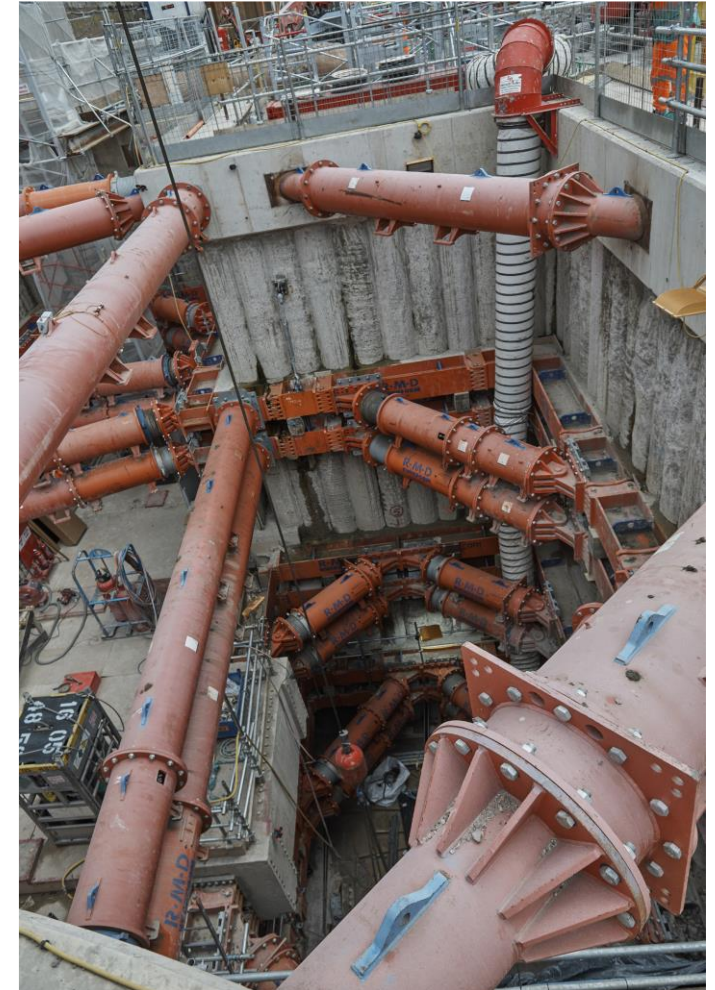
# Tubeshor

Tubeshor hybrid hydraulic tubular shoring system is used for propping waling beams or capping beams of large excavations and for vertical applications such as bridge bearing replacement. Tubeshor is available in 4 sizes – 320, 460, 610, 1060 which can all be simply bolted to one another using accessories to create required lengths.

An allowable working load (compression) in 320 of 1,400kN up to 1060 which has an allowable working load (compression) of 10,000 kN

Multiple extension lengths allow for coarse adjustment of the Tubeshor prop range. This provides flexibility to cope with horizontal propping lengths up to 50m with fewest possible joints.

Tubeshor is fully European Standard compliant, designed and manufactured in accordance with latest standards EN14653, EN1090 and carries the quality CE mark.



# Waler Trench Lining System

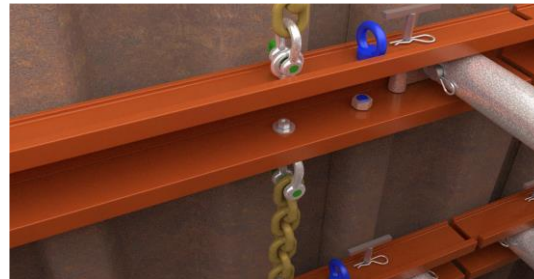
RMD Kwikform walers are designed to be used in conjunction with steel sheets for the support of small trenches for the safe installation of utilities.

Hydraulic Struts simply pin into aluminium walers, reducing labour requirements.

Struts are supplied in 6 different lengths of strut assemblies \*types A-F) and 5 different lengths of aluminium walers with simple pin connections making them easy to assemble

Integral lifting & suspension eyes means that frames can be suspended on the crane until they are safely attached to the sheets with restraint chains. Each of the props have a 310mm stroke hydraulic cylinder however the longer 3 struts have an extending trunnion end to give an additional 300mm of adjustment.

RMD Kwikform's Struts & Walers are fully European Standard compliant, designed and manufactured in accordance with latest standards EN14653, EN1090 and carry the quality CE mark.



# Trench Boxes

## Trench & Manhole Boxes

### Backhoe Trench Box & Extension Panels

Base Panel - (BUU13018)  
3012mm Long x 1800mm High  
x 60mm Thick



### Standard Trench Box & Extension Panels

Base Panel - (BUU33424)  
3400mm Long x 2400mm  
High x 100mm Thick



### Manhole Box - Standard Range

Base Panel - (BUU33724)  
3700mm Long x 2400mm  
High x 100mm Thick



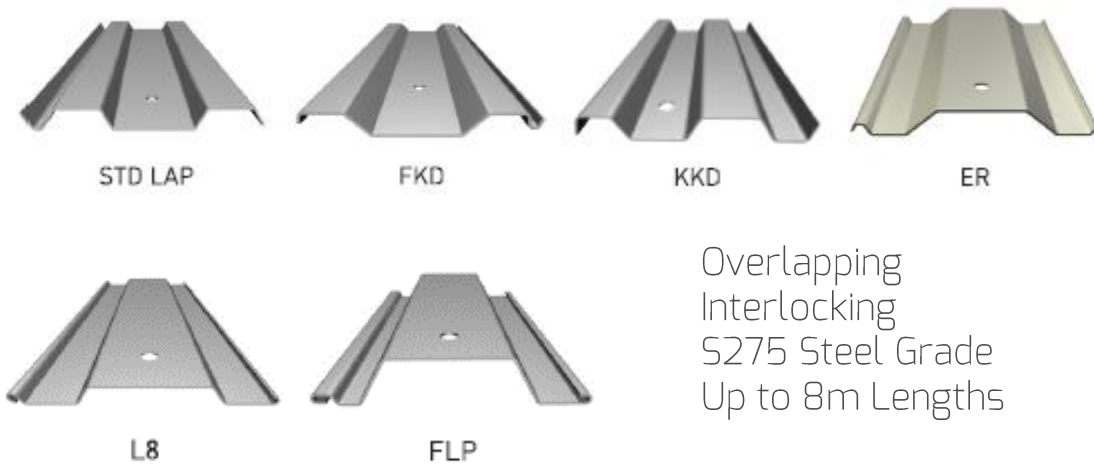
# Drag Boxes

## Front & Rear Strut Configurations

| Internal (mm) | External (mm) | Front Strut<br>Standard Drag Box Struts<br>(Series 300) | Rear Strut(s)<br>Super Box Struts<br>(Series 150/180) |
|---------------|---------------|---------------------------------------------------------|-------------------------------------------------------|
| 650           | 902           | 300x610 Drag Strut (650mm)                              | 150x630mm Fixed Strut (650mm)                         |
| 800           | 1052          | 300x760 Drag Strut (800mm)                              | 150x780mm Fixed Strut (800mm)                         |
| 950           | 1202          | 300x910 Drag Strut (950mm)                              | 150x930mm Fixed Strut (950mm)                         |
| 1100          | 1352          | 300x1060 Drag Strut (1100mm)                            | 150x850mm Inner Strut & 180x815mm Outer Strut         |
| 1250          | 1502          | 300x1210 Drag Strut (1250mm)                            | 150x850mm Inner Strut & 180x815mm Outer Strut         |
| 1400          | 1652          | 300x1360 Drag Strut (1400mm)                            | 150x850mm Inner Strut & 180x815mm Outer Strut         |
| 1550          | 1802          | 300x1510 Drag Strut (1550mm)                            | 150x1200mm Inner Strut & 180x815mm Outer Strut        |
| 1700          | 1952          | 300x1660 Drag Strut (1700mm)                            | 150x1200mm Inner Strut & 180x815mm Outer Strut        |
| 1850          | 2102          | 300x1810 Drag Strut (1850mm)                            | 2 No.150x850mm Inner Struts & 180x1250mm Outer Strut  |
| 2000          | 2252          | 300x1960 Drag Strut (2000mm)                            | 2 No.150x850mm Inner Struts & 180x1250mm Outer Strut  |



# Trench Sheets



Overlapping  
Interlocking  
S275 Steel Grade  
Up to 8m Lengths



## Standard Sheets

2.0m, 2.5m, 3.0m, 3.5m, 4.0m, 4.5m, 5.0m

## FKD400/6 Sheets

2.0m, 2.5m, 3.0m, 3.5m, 4.0m, 4.5m, 5.0m,

## KKD600/6 Sheets

2.0m, 2.5m, 3.0m, 3.5m, 4.0m, 4.5m, 5.0m, 5.5m, 6.0m, 6.5m, 7.0m, 8.0m

## KKD600/8 Sheets

4.0m, 4.5m, 5.0m, 5.5m, 6.0m, 6.5m, 7.0m, 8.0m

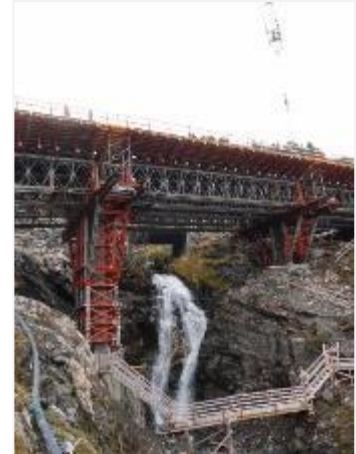
| Profile      | Steel Grade | B (mm) | H (mm) | Weight (kg/m) | (kg/m <sup>2</sup> ) | Section Modulus Z (cm <sup>3</sup> /m) | Moment Capacity (kNm/m) |
|--------------|-------------|--------|--------|---------------|----------------------|----------------------------------------|-------------------------|
| Overlapping  |             |        |        |               |                      |                                        |                         |
| Standard 275 | S275        | 330    | 35     | 11,35         | 34,4                 | 45,7                                   | 9,3                     |
| KD 400/6     | S275        | 400    | 50     | 22,1          | 55,3                 | 98,8                                   | 19,0                    |
| KD 600/6     | S275        | 600    | 78     | 37,5          | 62,5                 | 184,0                                  | 33,7                    |
| KD 600/8     | S275        | 600    | 80     | 50,0          | 83,3                 | 242,0                                  | 43,4                    |
| ER 750/8     | S355        | 742    | 94     | 53,6          | 72,2                 | 254,0                                  | 60,2                    |
| Interlocking |             |        |        |               |                      |                                        |                         |
| L8           | S275        | 430    | 38     | 14,4          | 33,2                 | 52,3                                   | 10,5                    |
| FLP 600/3.5  | S275        | 600    | 128    | 23,1          | 38,5                 | 183,0                                  | 33,5                    |
| FLP 600/6    | S275        | 600    | 130    | 38,8          | 64,6                 | 306,0                                  | 56,0                    |
| FLP 700/8    | S275        | 600    | 150    | 61,9          | 88,5                 | 539,6                                  | 98,8                    |

# RMD Kwikform Projects



# Bridges – Roads, Rail & Footbridge

- Arabian Ranches Interchange, UAE
- Boyne Bridge, Ireland
- A2M2, UK & Many Others
- Labdallen Bridge – Norway
- Ljoen Bridge – Norway
- Saggrenda Bridge – Norway
- Seut Bridge – Norway
- Hjøllø Bridge - Norway
- Stacket Bridge, Sweden
- Årsta Bridge – Sweden
- Barkarby Bridge – Sweden
- TP50 Bridge – Denmark
- TP40 S-BRA-02 Karlstrup
- Møllebæk - Denmark



# Tunnels & Metro Stations

- Tyne Tunnel 2 – UK
- Lee Tunnel – Ireland
- Buranda Tunnel – Australia
- Medway Tunnel – UK
- Boadilla Tunnel – Spain
- E18 Tunnel – Norway
- Wadi Muddiq – UAE
- Linea 5 Falso Tunnel – Spain
- Baldock Bypass – UK
- Øresund – Denmark
- Losail LRT – Qatar
- Allenby Tel Aviv - Israel



# Airports

- Flesland Airport – Bergen Norway
- Dubai Airport – Dubai
- Mid Field Airport – Abu Dhabi
- KAIA Airport – Saudi Arabia
- Doha Airport – Qatar
- Salalah Airport – Oman
- Incheon Airport – South Korea



# Commercial Projects

- Dubai, Mall - UAE
- Mall of Emirates - UAE
- Egypt Embassy - Syria
- Pearl City - Kuwait
- Muscat City Centre - Oman
- Dubai Marina - UAE
- The Mirdiff City Centre - UAE
- Hotel El Golf - Chile
- Hotel & Resort Between 2 Bridges - UAE
- Gateway Shopping Centre Hull - UK
- Muscat Military College - Oman
- Perth Police Complex - Australia
- Tate Modern London - UK



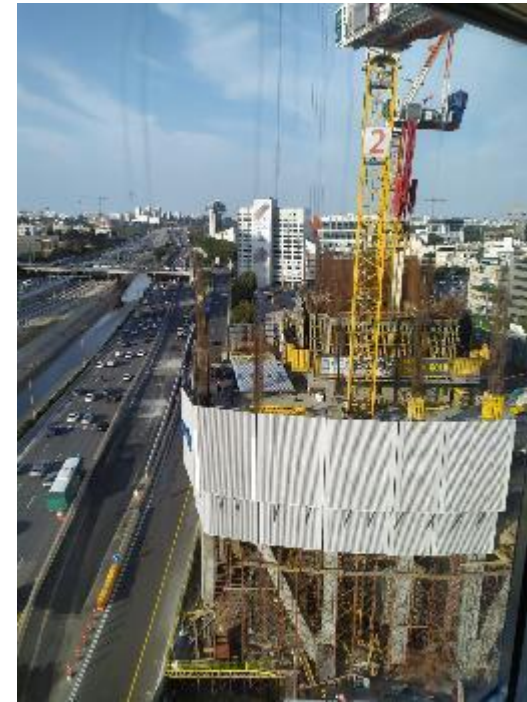
# Dams/Power/Biomass/Hydro Plants

- Goesgen Power Station - Switzerland
- Runcorn Power Station - UK
- Pembroke Power Station - UK
- Wadi Dayqah - Oman
- Chabrouh Dam - Lebanon
- Kelinchi Dam - Malaysia
- Pak Phanang Dam - Thailand
- Serjerong Dam - Indonesia
- Houay Ho Hydro Project - Laos
- Harvey Dam – Australia
- Chile power station - Chile



# High Rise Developments

- Jumeirah Beach Hotel, UAE
- Bay Tower, Lebanon
- Ibis Hotel, UAE
- Radisson Suites, Australia
- Sky Parks Car Park, Scotland
- Ruby Mill, India
- Park Towers, UAE
- Al Mamzar Tower, UAE
- BBC Tower, Israel
- East & Tower, Israel
- Hotel El Golf, Chile
- Icon Tower, Israel
- Etisalat Building, UAE
- Capital Tower, UAE
- Ducab, Dubai



# Cultural & Religious Buildings

- Makkah Mosque Mecca - Saudi Arabia
- Sultan Qaboos Mosque in Niswa - Oman



# Industrial

- LNG Tanks – UAE, UK, South Korea & Sakhalin Island
- Buxton Cement Works - UK
- Collie Power Station - Australia
- Phosphate Storage Tank - Morocco
- Al Salam Industrial Park - UAE
- Barka Power Plant - Oman
- Flour Mills Silos - Bahrain
- Carboneras Pinas - Spain
- Jeddah STW – Saudi Arabia



# Leisure, Sport & Entertainment

- Formula 1, Yas Island, UAE
- Baniyas Sport Club, Syria
- Dubai Festival City, UAE
- Millennium Dome, UK
- House of Musical & Arts, Oman
- Al Nasr Cinema, UAE
- 2002 World Cup Concert, Korea
- Dubai Sailing Club, UAE
- Dubai Sport City, UAE
- Botanic Gardens, Oman
- Sheffield Events Arena, UK
- Basra Sports City Stadium, Iraq
- 2012 Olympics Aquatics Centre - UK



# Hospitals

- Police Hospital – Accra, Ghana
- James Cook University Medical Centre – Australia
- Southern General Hospital – Glasgow
- Hammed Hospital – Doha
- Royal London Hospital – UK
- Mansfield Hospital – UK
- Sheffield Hospital – UK





Martyn Henry  
UK Export Manager  
+44 7795 617758  
[martyn.henry@rmdkwikform.com](mailto:martyn.henry@rmdkwikform.com)



Alan Kenward  
Export Sales Coordinator  
+44 7814 937720  
[alan.kenward@rmdkwikform.com](mailto:alan.kenward@rmdkwikform.com)



Simon Coveney  
Export Sales & BDM  
Europe, Sweden, Canada, Caribbean, East,  
West & Southern Africa  
+44 7483 316005  
[simon.coveney@rmdkwikform.com](mailto:simon.coveney@rmdkwikform.com)



Gary Ralph  
Southern Regional Director  
+44 7795222556  
[gary.ralph@rmdkwikform.com](mailto:gary.ralph@rmdkwikform.com)



Andrzej Matysiewicz  
Export Sales & BDM Poland  
PL Mob: +48 506 17 17 45  
UK Mob: +44 7483 372 433  
[andrzej.Matysiewicz@rmdkwikform.com](mailto:andrzej.Matysiewicz@rmdkwikform.com)



Jackie Newey  
Export Sales Coordinator  
+44 7786 688579  
[jackie.newey@rmdkwikform.com](mailto:jackie.newey@rmdkwikform.com)

Frank Marton  
Export BDM  
Central & Eastern Europe, Finland &  
Denmark  
+36 70 607 7940  
[frank.marton@rmdkwikform.com](mailto:frank.marton@rmdkwikform.com)