



11

GEDA AB 450 / 650

GEDA Suspended Working Platform Standard

GEDA AB 650 M

252

254

256

GEDA®
AB 450
AB 650

The perfect alternative for working without scaffolding on all construction sites

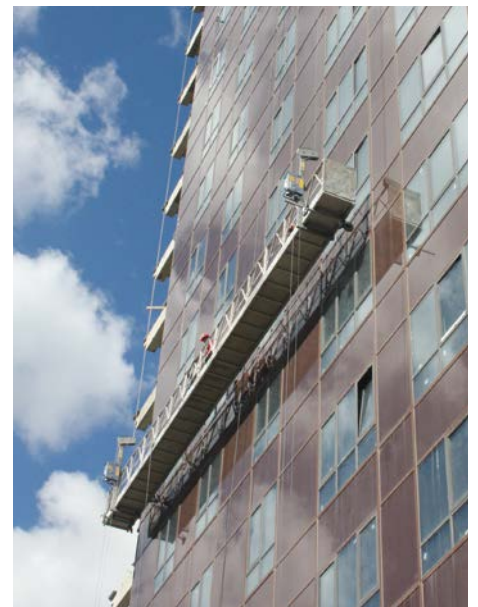
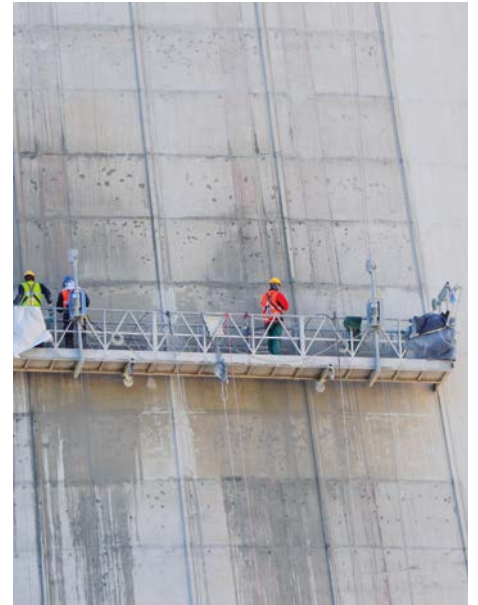
Façade work regardless of building height

Variable working height adjustment for ergonomically convenient working

Modular aluminium platform system (segment length 1/2/3 m)

Push-to-connect galvanised outrigger modules





GEDA AB

GEDA Suspended Working Platforms allow working on all types of building façades without scaffolding.

The models GEDA AB 450 and GEDA AB 650 have been part of the GEDA range for many years, providing vertical transport for passengers and materials with a lifting force of 450 and 650 kg, respectively.

The operating height of the GEDA Suspended Working Platforms can be adjusted to within a centimetre, allowing work to always be carried out in the most ergonomically convenient position. Corner pieces and brackets can be used to adapt the platform to a wide variety of building shapes.

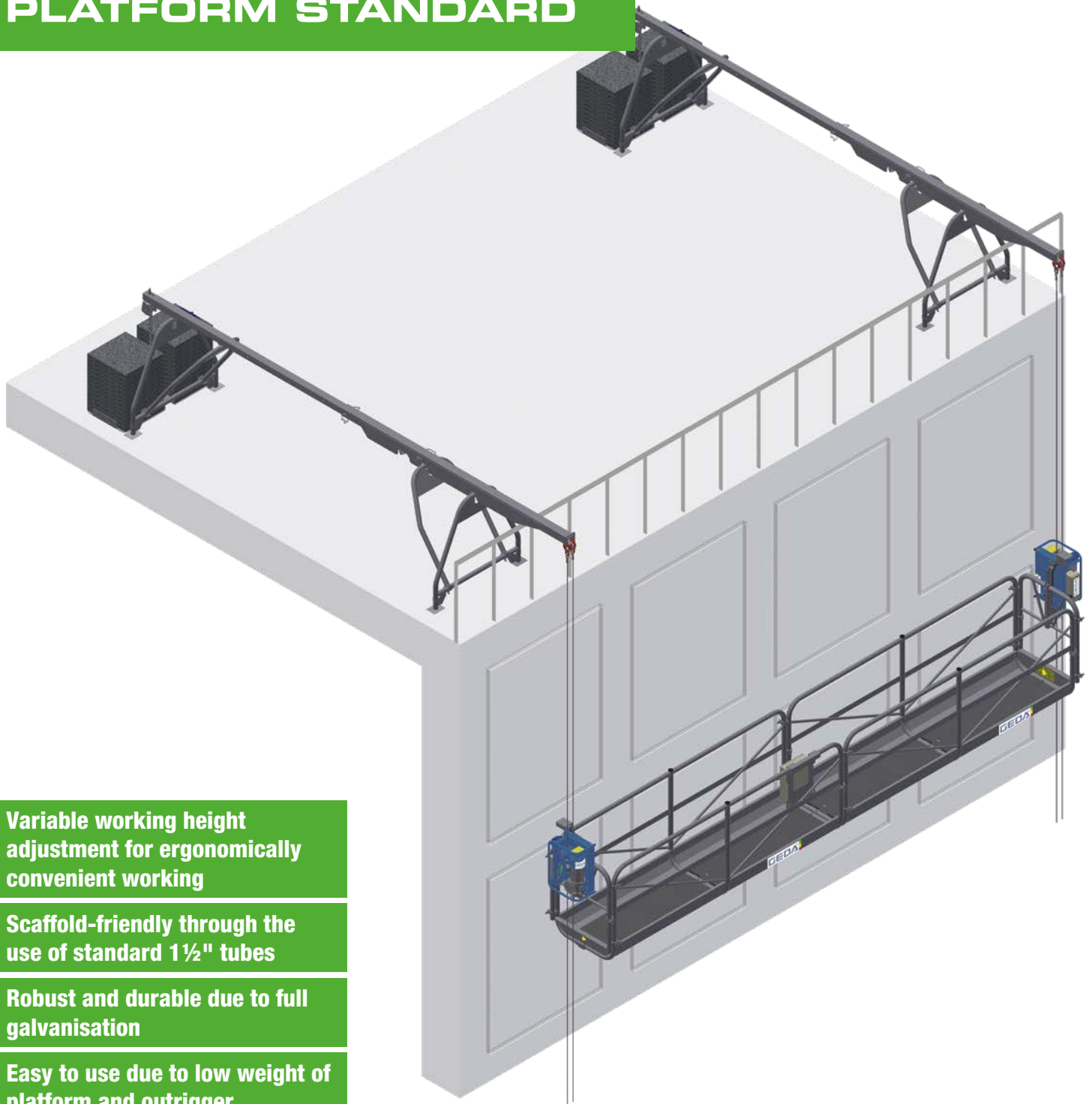
Easy and convenient handling is another crucial advantage. The push-to-connect design ensures fast assembly and disassembly of the galvanised outriggers. The individual components are very lightweight and can be transported by just one person, which also makes the assembled platform considerably easier to move.

Safety features such as the integrated tilt compensation and the overload protection ensure safe working at great heights.

Technical data:

	450 kg 650 kg
	8 m/min
	1.4 kW/230 V/50 Hz/16 A 1.4 kW/400 V/50 Hz/16 A
	1-14 m

GEDA[®] SUSPENDED WORKING PLATFORM STANDARD



Variable working height adjustment for ergonomically convenient working

Scaffold-friendly through the use of standard 1½" tubes

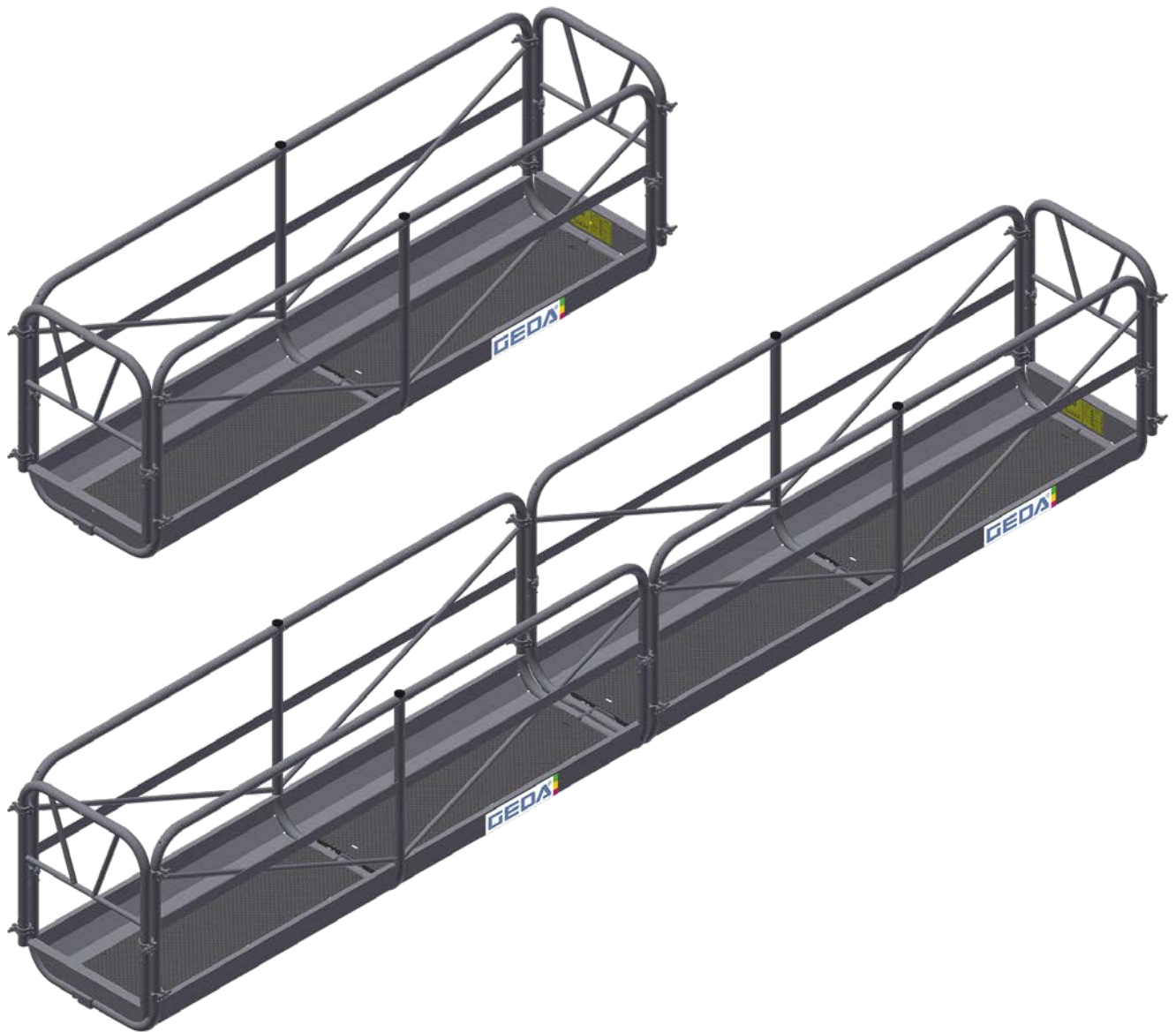
Robust and durable due to full galvanisation

Easy to use due to low weight of platform and outrigger

No losable small parts

Outrigger can be used as three-legged or four-legged variant





GEDA Suspended Working Platform Standard

The use of 1½" tubes ensures that the new GEDA Standard Suspended Working Platform is flexible to use and very scaffold-friendly. A particularly convenient feature is that the platforms and outriggers can be installed using just one spanner.

The platform is big enough for passengers and materials and the high-precision adjustment of the operating height always ensures the most ergonomically convenient working position.

Both for transport and for assembly/disassembly, the new GEDA Standard Suspended Working Platform benefits greatly from the low dead weight of the platform and the outriggers. The easy handling – with no small parts that can be lost – also translates into considerable time and cost savings.

Suspended working platforms are often exposed to rough environmental conditions in daily operation at construction sites. But GEDA had made provisions for that as well: the full galvanisation of the robust platform defies wind and weather. The outrigger can be used as a three-legged or four-legged variant, ensuring maximum adaptability and flexibility depending on the specific conditions on site.

Technical data:



650 kg



8 m/min



**1.4 kW/400 V/
50 Hz/16 A**



3/6 m

GEDA[®] AB 650 M

**Efficient and reliable
material transport along
the façade**

**Flexibly adaptable to the situa-
tion and requirements on site**

**Conversion kit for doubling the
load capacity to 1300 kg**

Comprehensive safety features





GEDA AB 650 M

With traction of 650 kp and a lifting speed of 8 m/min, the GEDA AB 650 M material winch ensures efficient and reliable transport of materials along façades.

Various suspension cable lengths, optional extension cords, outriggers (either with 2.0 or 2.8 m radius) and ballast weights ensure that the winch adapts flexibly to the conditions and requirements on site.

A conversion kit to a load capacity of 1300 kg is available for transporting greater loads. It goes without saying that the GEDA AB 650 M material winch is equipped with the usual safety devices including a rope coil monitoring system and an overload safety device.

Technical data:



650 kg



8 m/min



**1.4 kW/400 V/
50 Hz/16 A**